

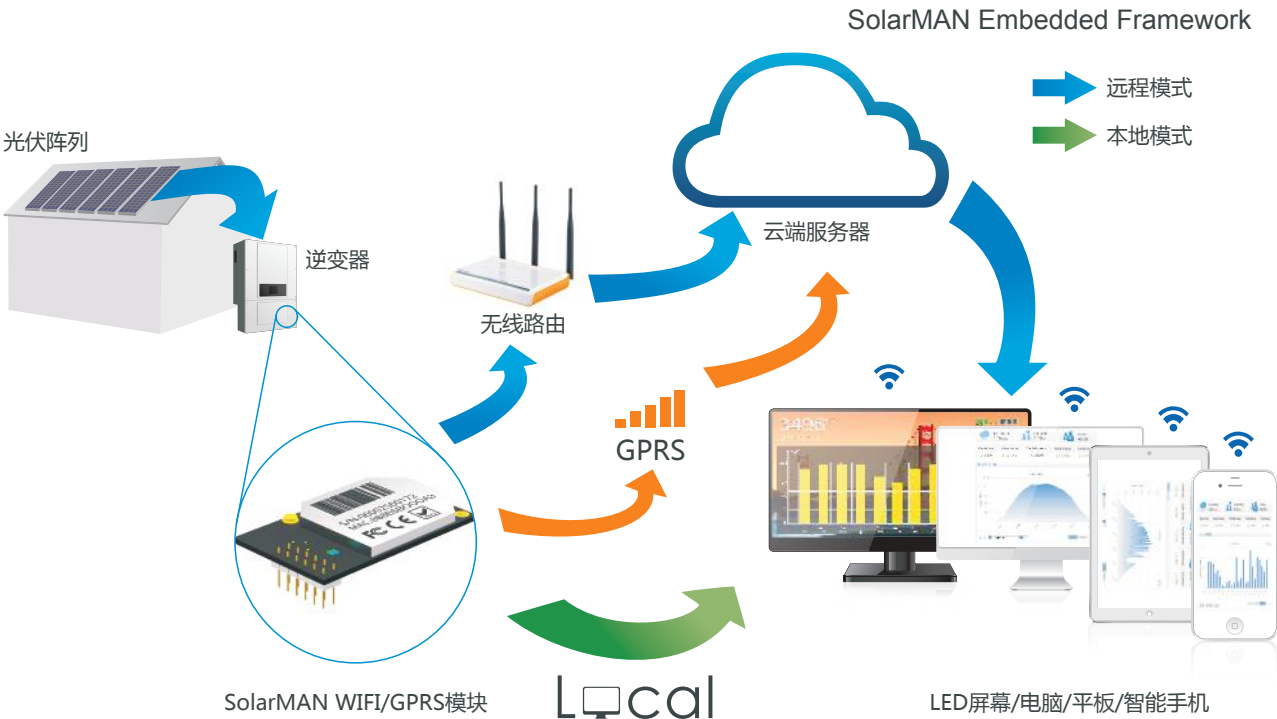
Embedded WiFi Kit Quick Guide



From this page

SolarMAN Embedded WiFi Kit S-W02E/S-W02ES is an embedded data logging module. With its "plug & play" function, the module is embedded in an inverter and can collect information of PV systems from the inverter.

With the integrated WiFi function, the module can connect to router and transmit data to the web server, enabling users to view collected data by logging in the online monitoring portal (www.solarmanpv.com/portal). In addition, users can also get access to the internal web server of the module via WiFi and directly obtain data from the module.



This Quick Guide is intended to assist users in quick configuration and start of Embedded WiFi Kit S-W02E and S-W02ES. If any problems, please refer to corresponding chapters of **User Manual** for details. Configuration interfaces may differ according to different product models.

Sofar SolarMAN Quick_Setup Manual (Wi-Fi Optional)

Outlines of this chapter

This quick guide is intended to assist users in quick configuration and start of Embedded Wi-Fi module.

1. Network setting

Note

The setting hereinafter is operated with Windows7 for reference only. If other operating systems are used, please follow the corresponding procedures.

- 1. Prepare a computer or device, e.g. tablet PC and smart phone that enables Wi-Fi.
- 2. Obtain an IP address automatically.

Procedure:

Setp1: Click on

Setp2: Connect with your personal internet access point (AP) or WLAN.

Example: "sofarpv" in this case. See Figure 1

Setp3: Right click on your connected AP, click on Status > Properties to open the wireless network property setup window. See Figure 2

Figure 1

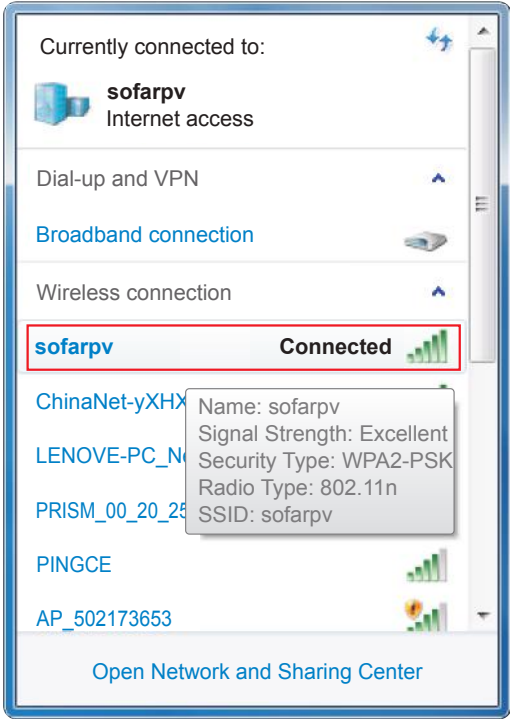
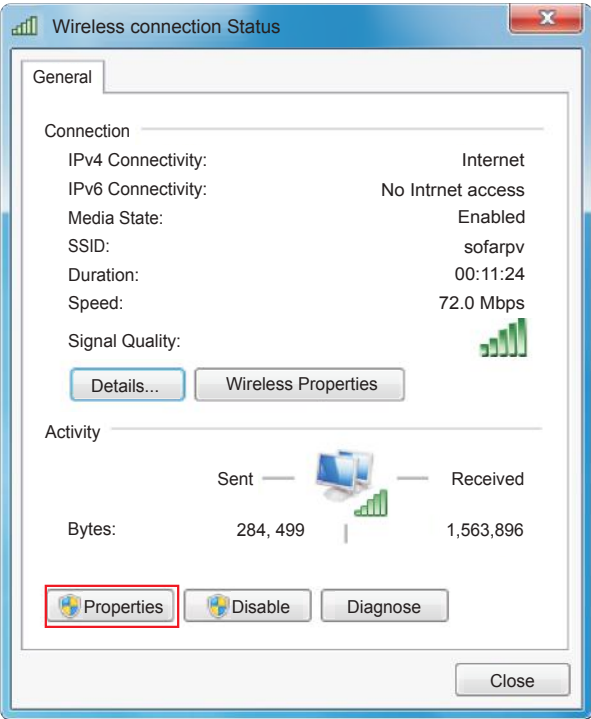


Figure 2



Setp4: Double click on internet Protocol Version 4 (TCP/IPv4). Click on General > Obtain an IP address automatically > OK to finish the setup. See Figure 3, 4:

Figure 3

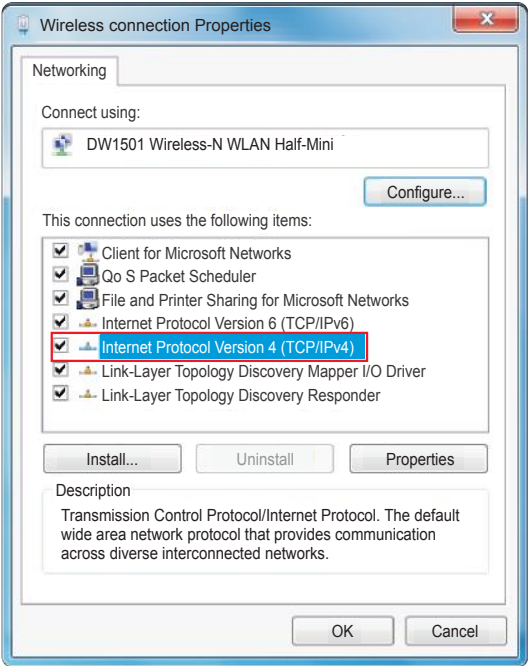
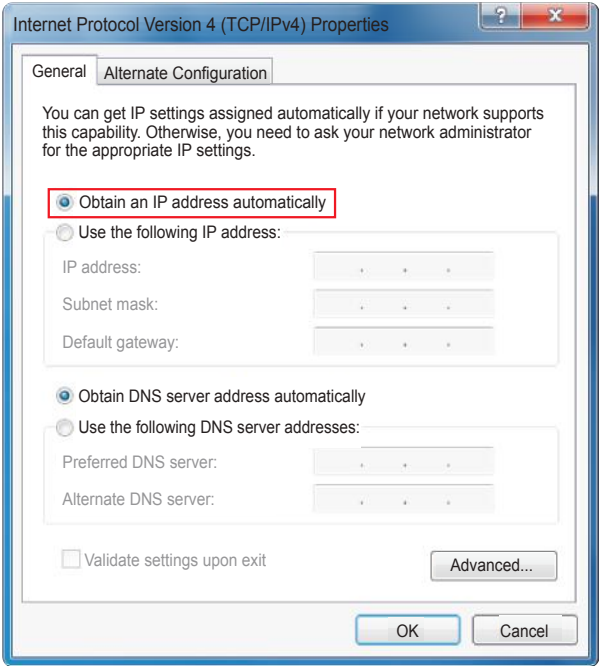


Figure 4



3. SOFAR inverter Wi-Fi module setup

Procedure:

Setp1: Click on ;

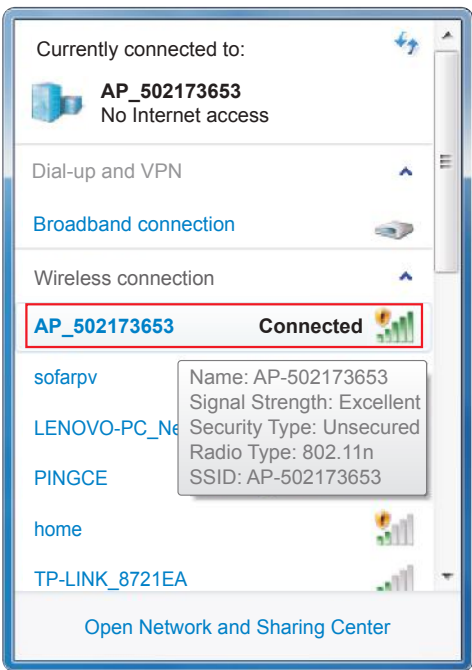
Setp2: Connect with SOFAR inverter Wi-Fi module, defaulted with no password and its name started as AP_ and a following 9-digit Wi-Fi serial number. See Figure 5, 6.

Example: AP_50217365

Figure 5



Figure 6



Setp3: When connected, open browser, head to <http://10.10.100.254/>, and fill in user name and password which all defaulted as admin for the first time. See Figure 7

Figure 7



Note

Browsers like internet Explorer 8+, chrome 15+ and Firefox 10+ are recommended.

Setp4: When successfully logged in, users can find basic information on their inverter Wi-Fi module.

Figure 8

| Device information | |
|--------------------|--|
| Staus | Device serial number 502173653 |
| Wizard | Firmware version H4.01.43Y4.0.01W1.0.13(2014-07-161-S) |
| Wireless | Wireless SP mode Enable |
| Cable | SSID AP_502173653 |
| Advanced | IP address 10.10.100.254 |
| Account | MAC address 00:95:69:1A:33:30 |
| Update | Wireless STA mode Enable |
| Restart | Router SSID sofarsolar |
| Reset | Signal Quality 0% |
| | IP address 0.0.0.0 |
| | MAC address 00:95:69:1A:33:31 |
| | Cable mode Enable |
| | IP address 0.0.0.0 |
| | MAC address 00:95:69:1A:33:31 |
| Connected Inverter | |

Setp5: Please click on Wizard > Start to start the detailed setup on your inverter Wi-Fi module.

Figure 9

Staus

Wizard

Wireless

Cable

Advanced

Account

Update

Restart

Reset

Dear users:

Thank you for choosing our device.

Next, you can follow the setup wizard to complete the network setting step by steep; or you can select the left menu for detailed setting.

★ Note: Before setting, please make sure that your wireless or cable network is working.

Start

1

2

3

4

5

6

7

Setp6: Select Wireless connection, and click Next.

Figure 10

Staus

Wizard

Wireless

Cable

Advanced

Account

Update

Restart

Reset

Connection Settings:

Wireless connection

Cable connection

Wireless

Enabled

Back

Next

1

2

3

4

5

6

7

Note

If the signal strength (RSSI) of your selected internet access point (AP) is lower than 15%, the connection may be unstable, please select other available network or shorten the distance between the device and the router.

Setp7: Select your personal wireless network. This can be done by refreshing your wireless network or add it manually. See Figure 11

Figure 11

Staus

Wizard

Wireless

Cable

Advanced

Account

Update

Restart

Reset

Please select your current wireless network:

| | | | |
|---|-------------------|------|---|
| <input type="radio"/> SZKTZ | 5e:ac:0a:2c:bc:3f | 10% | 1 |
| <input type="radio"/> TP-LINK_3B | 4e:ac:0a:2c:bc:3b | 10% | 1 |
| <input type="radio"/> YDS-WIFI | 4c:ac:0a:2b:04:9f | 76% | 1 |
| <input type="radio"/> PRISM_00_20_25 | 5e:ac:0a:26:8b:fe | 10% | 1 |
| <input type="radio"/> ChinaNet-EWlw | 5e:ac:0a:2b:04:9f | 70% | 1 |
| <input type="radio"/> ChinaNet-kwza | 4c:ac:0a:26:8b:fe | 15% | 1 |
| <input checked="" type="radio"/> sofarpv | e0:05:c5:b2:7b:5a | 81% | 2 |
| <input type="radio"/> 360WIFI-99FA | 90:94:e4:3c:61:1c | 76% | 2 |
| <input type="radio"/> SCJ | 00:21:27:46:c5:98 | 29% | 3 |
| <input type="radio"/> TP-LINK_2.4GHz_F2BC95 | ac:cf:23:ff:02:9c | 100% | 3 |
| <input type="radio"/> PINGCE | 8c:6c:9f:04:b3:2c | 96% | 6 |
| <input type="radio"/> yba | 00:21:27:5c:06:98 | 5% | 6 |

★ Note: When RSSI of the selected WIFI network is lower than 15%, the connection may be unstable, please select other available network or shorten the distance between the device and router.

Refresh

Add wireless network manually:

Network name(SSID)
(Note: case sensitive)

sofarpv

Encryption method

WPA2PSK

Encryption algorithm

TKIP

Back

Next

1

2

3

4

5

6

7

Note

If you choose to add your wireless network manually, please keep encryption method and encryption algorithm the same as your home router's setup.

Setp8: Please enter your personal wireless network password. Then click Next.

Figure 12

Staus

Wizard

Wireless

Cable

Advanced

Account

Update

Restart

Reset

Please enter the wireless network password:

Password(1-32 bytes)
(Note: case sensitive)

Re-enter password

☐ Show Password

Back

Next

1

2

3

4

5

6

7

Setp9: Select Enable > Next to obtain IP address automatically.

Figure 13

Staus

Wizard

Wireless

Cable

Advanced

Account

Update

Restart

Reset

Please fill in the following information:

Obtain an IP address automatically

Enable

IP address

0.0.0.0

Subnet mask

0.0.0.0

Gateway address

0.0.0.0

DNS server address

Back

Next

1

2

3

4

5

6

7

Setp10: Click Next.

Figure 14

Staus

Wizard

Wireless

Cable

Advanced

Account

Update

Restart

Reset

Enhance Security

You can enhance your system security by choosing the following methods

Hide AP

Change the encryption mode for AP

Change the user name and password for Web server

Back

Next

1

2

3

4

5

6

7

Setp11: Click OK to wait for setting complete.

Figure 15

Staus

Wizard

Wireless

Cable

Advanced

Account

Update

Restart

Reset

Setting complete!

Click OK, the settings wil take ffect and the system will restart immediately.

If you leave this interface without clicking OK, the settings will be ineffective.

Back

OK

1

2

3

4

5

6

7

Figure 16

Staus

Wizard

Wireless

Cable

Advanced

Account

Update

Restart

Reset

Setting complete! Please close this page manually!

Please login our management portat to monitor and manage your PV system.(Please register an account if you do not have one.)

Tore-login the configuration interface, please make sure that your computer or smart phone and our device are in the same network segment, and enter the new IP address of the device to access the interface.

1

2

3

4

5

6

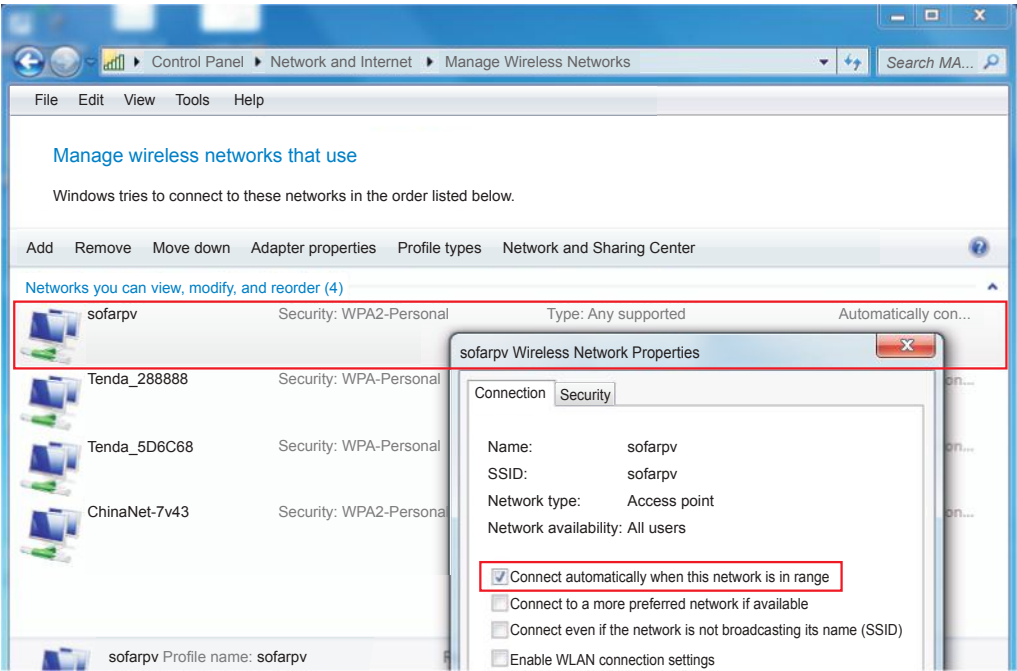
7

Setp12: Setup of wireless network connection priority and connection mode.

Open Control panel > Network and sharing center > Manage wireless networks. Set your home router’s access point as default to connect with your personal computer automatically. Make sure it has the highest priority. To the device Wi-Fi module, set its AP as default to connect with your personal computer manually.

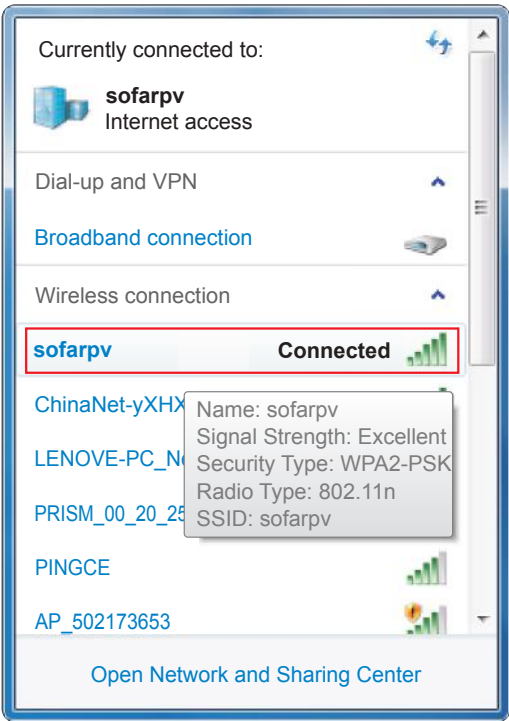
Example: make sure “sofarpv” wireless network connection priority is the highest.

Figure 17



Setp13: Connect with your personal wireless network or WLAN.

Figure 18



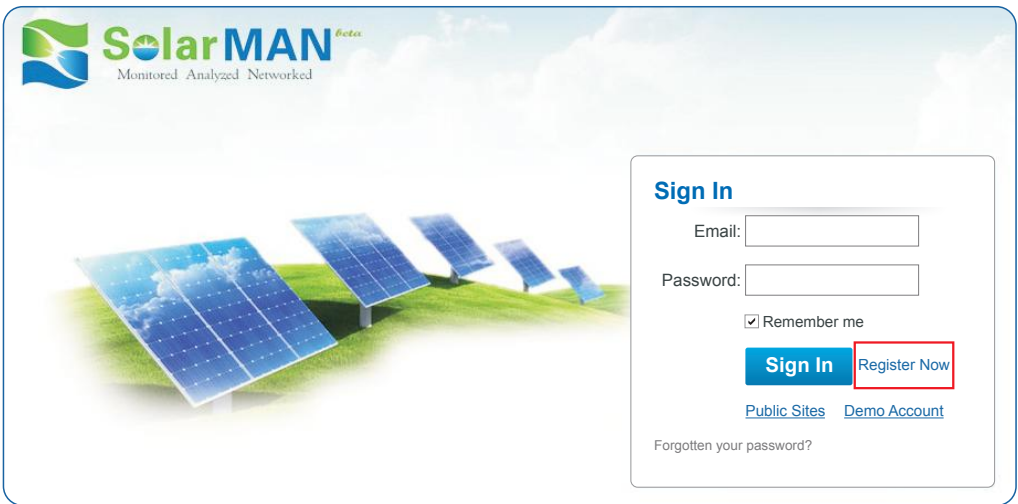
2. Register on SolarMAN Portal

Launch your browser, open SolarMAN portal website: <http://www.solarmanpv.com/portal/>

Procedure:

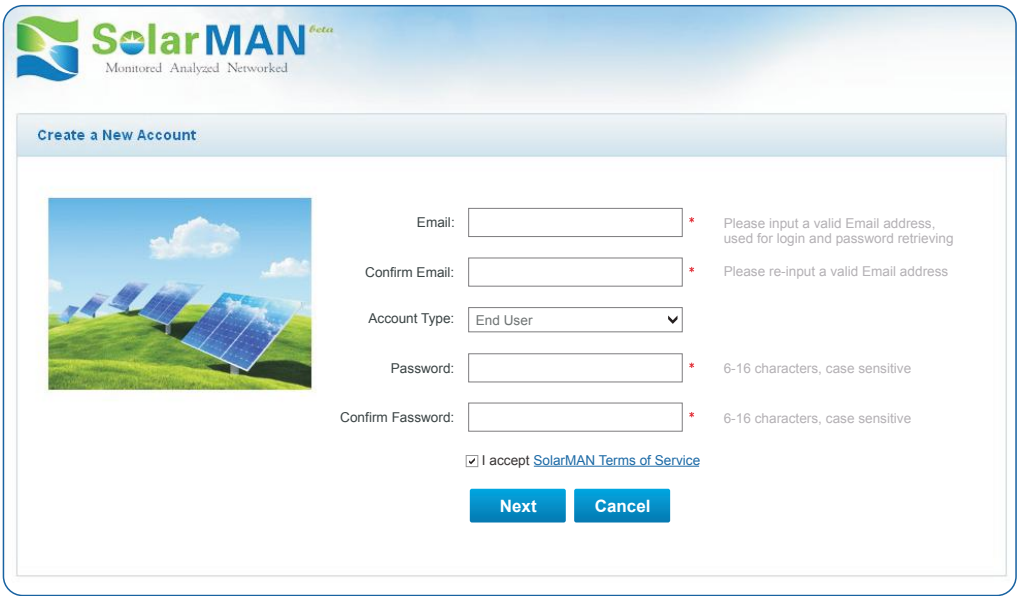
Step1: Click on Register now if you do not have an account.

Figure 19



Step2: Fill in basic registration information upon request.

Figure 20



Note

Browsers like internet Explorer 8+, chrome 15+ and Firefox 10+ are recommended.

Setp3: Fill in details to complete the registration.

Figure 21

Create a New Account

Site Name


SOFAR Inverter

Maximum 20 Letters

Upload Image

Default.jpg

Maximum file size: 4M;
File types: .jpg,.png, .bmp,.gif, .jpeg.jpg



OK

Country

China

Province/State

Anhui

City

GUANGZHOU

Street

Locate Your Site On Map

ZIP Code

Timezone

(GMT +08:00) Beijing,Chongqi

Number Format

1234567.89

System Size(kWp)

Timezone

AUD AU\$

Panel Type

3S

Inverter Type

SOFAR

Description

☒ Make This Site Public

Registration

Datalogger S/N

0502173653

Installer

Contact

Name


Phone

Complete

Cancel

Setp4: If registration is successful, the above page will display. Click OK to return to the homepage of the portal.

Figure 22



Sign In

Email:

Password:

☒ Remember me

Sign In

Register Now

[Public Sites](#)

[Demo Account](#)

Forgotten your password?


Successful registration

OK

3. Log in SolarMAN Portal to manage power station

After successful registration, open the login page of SolarMAN Portal, and input your E-mail and password to access the monitoring system and start monitoring and management of power plants.

Figure 23



Monitored Analyzed Networked

Sign In

Email:

Password:

☒ Remember me


Sign In

Register Now

[Public Sites](#)

[Demo Account](#)

Forgotten your password?



Note

In order to make sure your solar system is being well monitored by our SolarMAN monitoring system, please click the Real Time label to see if there is real time data within 15 minutes. If so, your SolarMAN network setup is successful. If not, please re-check the above procedure.

Figure 24

HomeMy SitePublic SitesAccount

Sofar20000TL 3phase

OverviewReal TimeHistoryAlertReportSettings

nearby 28-34°C

6/5 light rain shower 28-33°C

6/6 Moderate or heavy rain shower 28-33°C

Alerts: 0 items

Inverter

Page 1 of 1

| No. | Inverter S/N | DC Input | | | AC Ouput | | | | Total Energy(kWh) | Temperatu |
|-----|----------------|----------|------------|------------|----------|------------|------------|----------|-------------------|-----------|
| | | Channel | Voltage(V) | Current(A) | Phase | Voltage(V) | Current(A) | Power(W) | | |
| 1 | SC1ES320E3D001 | PV1 | 577.8 | 8.9 | L1 | 230.8 | 10.9 | 7640 | 5471 | 54.0 |
| | | PV2 | 577.7 | 4.4 | L2 | 235.4 | 10.8 | 0 | | |
| | | PV3 | 0.0 | 0.0 | L3 | 236.6 | 10.9 | 0 | | |

★ Add more inverters on SOFAR SolarMAN monitoring system

Click Setting > Device > Add to enter the 9-digit serial number (SN), and then click OK to complete the setting of adding a new inverter.

Figure 25

HomeMy SitePublic SitesAccount

Sofar20000TL

OverviewReal TimeHistoryAlertReportSettings

nearby 28-34°C

6/5 light rain shower 28-33°C

6/6 Moderate or heavy rain shower 28-33°C

Alerts: 0 items

SiteDeviceAlertCalibration

| | Datalogger S/N | Datalogger Type | Inverter S/N | Inverter Type | Status | Last Upadated |
|---|----------------|-------------------------|----------------|---------------|--------|---------------------|
| 1 | 502443889 | WiFi/Ethernet Collector | SC1ES320E3D001 | SOFAR | | 2014-07-26 15:23:13 |

Add

Figure 26

HomeMy SitePublic SitesAccount

Sofar20000TL

OverviewReal TimeHistoryAlertReportSettings

nearby 28-34°C

6/5 light rain shower 28-33°C

6/6 Moderate or heavy rain shower 28-33°C

Alerts: 0 items

Add

DataloggerS/N

OK

Cancel

★ Alert notification setup

When any abnormal situation happened to the device, an error message would be sent automatically to your designated email account in second.

Please fill in below your personal email account to complete the setup of your alert notification.

Figure 27

HomeMy SitePublic SitesAccount

Sofar20000TL

OverviewReal TimeHistoryAlertReportSettings

nearby 28-34°C

6/5 light rain shower 28-33°C

6/6 Moderate or heavy rain shower 28-33°C

Alerts: 0 items

SiteDeviceAlertCalibration

Type of Alert Notification:

Email

Email for Alerts:

OK